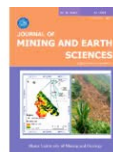




Journal of Mining and Earth Sciences

Website: <https://jmes.humg.edu.vn>



A study on identifying and analyzing road traffic incident hotspots on National Highway 1A, Thanh Hoa province, Vietnam, employing Statistical and GIS Techniques



Ha Thi Le ^{1,2}, Thao Phuong Thi Vu ^{2*}, Thao Phuong Thi Do ²

¹ Campus in Ho Chi Minh City, University of Transport and Communications, Ho Chi Minh City, Vietnam

² Hanoi University of Mining and Geology, Hanoi, Vietnam

ARTICLE INFO

Article history:

Received 29th May 2024

Revised 17th Sept. 2024

Accepted 09th Oct. 2024

Keywords:

Getis-Ord Gi*,

Hotspot,

Kernel density estimation,

Road traffic incident,

Spatial autocorrelation.

ABSTRACT

The study focuses on the prevalence of road traffic accidents in Vietnam, particularly along national highways, which are frequent and severe. Specifically, it examines National Highway 1A passing through Thanh Hoa province, utilizing statistics and geographic information systems (GIS) to identify high-risk areas. Data from road traffic incidents spanning from 2020-2023 were used to analyze spatial autocorrelation, kernel density estimation (KDE), and Getis-Ord Gi* hotspot analysis. Spatial autocorrelation assessed the autocorrelation of incidents, while KDE visualized hotspot clusters. Meanwhile, Getis-Ord Gi* hotspot analysis determined the statistical significance of incident hotspot locations. The analysis revealed a higher concentration of hotspots in the northern section of the national highway compared to the southern section. Notably, the section passing through Thanh Hoa city center, Hau Loc, and Hoang Hoa districts exhibited very high traffic density. Hotspots identified through Getis-Ord Gi* statistics aligned with those detected using KDE. Furthermore, several hotspots were concentrated at bends in the national highway, often lacking warning signs despite high traffic density. The study's findings serve as valuable references for authorities, enabling them to implement timely intervention measures such as infrastructure improvements or enhanced law enforcement to address issues and provide warnings regarding road traffic incident risks.

Copyright © 2024 Hanoi University of Mining and Geology. All rights reserved.

*Corresponding author

E - mail: vuthiphuongthao@humg.edu.vn

DOI: 10.46326/JMES.2024.65(6).03

1. Introduction

Road transportation plays a pivotal role in every nation's socio-economic development and international integration. However, road traffic incidents (RTIs) are at risk, significantly impacting human health and property. According to a report by the World Health Organization (2015), RTIs are most prevalent in low- and middle-income countries, where the number of deaths resulting from these incidents is three times higher than in high-income countries (Abdullah et al., 2021). In Vietnam, congestion resulting from traffic incidents is commonplace in major cities (Truong, 2023). Vietnam also exhibits a high death rate due to RTIs, with approximately 2.34 deaths per 100,000 people (Peden, 2004). Several factors contribute to RTIs, including subjective human factors such as poor awareness of road traffic safety laws, speeding, driving under the influence of stimulants, and disregarding traffic signals (Oliver et al., 2021).

Furthermore, other influencing factors contribute to Vietnam's road traffic incidents (RTIs). These include incomplete transport infrastructure, resulting in numerous blackspots, lax operation, management, and supervision of transport activities, and the uneven quality of vehicles participating in traffic (Tran et al., 2016).

To mitigate the risk of incidents, it is imperative to have warnings regarding incident hotspot locations (Khatun et al., 2024). According to Mhetre & Thube (2023), hotspots are considered as the number of severe injury collisions occurring within a defined length segment (500 m) in 3 years or if the number of deaths is equal to or greater than 10. In other words, a cluster of crashes with high levels of injuries is called hotspots. Conversely, if there is a cluster of low-injury crashes, it is called coldspots. Researchers have employed various traditional methods to identify hotspots, such as the incident rate method (Carson & Powers, 2004), equivalent property damage index (Campbell & Knapp, 2005), and the Empirical Bayes method (EB) (Hauer et al., 2002). Among these, the most effective method is the EB method (Manepalli et al., 2011).

Nonetheless, the Empirical Bayes (EB) method has limitations, notably the requirement

for training and proficiency in statistical analysis. Numerous other techniques utilizing Geographic Information Systems (GIS) to identify hotspots have emerged, enabling the identification of areas at high risk of incidents (Aguero-Valverde & Jovanis, 2006).

Spatial statistics analysis of incident hotspots is crucial in understanding the spatial patterns of road traffic incidents. Moran's I statistic is a commonly used technique for testing autocorrelation. This method assesses whether a set of incidents in an area is clustered, dispersed, or randomly distributed by comparing the values of a variable at one location with those at all other locations of that variable. However, for detailed identification of significant hotspot or cold spot clusters, it is essential to utilize the Getis-Ord G_i^* statistical analysis (Nie et al., 2015).

Kernel density estimation (KDE) is a non-parametric method well-suited for identifying incident hotspots (Plug et al., 2011; Prasannakumar et al., 2011). The KDE algorithm delineates the range encompassing the risk of an incident, visually indicating areas where incidents are likely to occur based on spatial relationships. Moreover, the KDE analysis generates a raster layer wherein pixels are allocated values corresponding to the intensity characteristic of the entire area, facilitating comparison and classification (Anderson, 2009).

However, KDE has limitations as it does not furnish statistical significance of hotspots (Xie and Yan, 2013; Yao et al., 2016), nor does it offer criteria for prioritizing incident hotspots (Plug et al., 2011). To address this shortfall, some studies have employed Getis-Ord G_i^* statistical to identify critical locations where accidents occur (Manap et al., 2019; Ord and Getis, 1995). The output of Getis-Ord G_i^* statistical analysis comprises a z-score and p-value for each incident location, aiding in determining whether the cluster is statistically significant.

This study aims to integrate spatial autocorrelation analysis, kernel density estimation, and hotspot incident analysis utilizing GIS to identify and assess the severity of traffic incident hotspots. Moran's I index is employed to detect incident clusters, while kernel density estimation visually represents incidents in the study area through color coding and

corresponding density values. Furthermore, the Getis-Ord G_i^* statistic is utilized to determine the statistical significance of these density values.

2. Materials and methodology

2.1. Study area

National Highway 1A serves as a crucial link between the Northeast and Southeast regions of Thanh Hoa province, spanning coordinates between $19^{\circ}18'45''$ - $20^{\circ}08'00''$ North latitude and $105^{\circ}04'30''$ - $105^{\circ}05'45''$ East longitude. This highway traverses through 5 districts, one city, and one town within the province. With a total length of 98 kilometers, National Highway 1A

features a level III road classification (asphalt road) and comprises four lanes (refer to Figure 1).

2.2. Data

Figure 2 illustrates the distribution of incident locations in 4 years (2020÷2023) on National Highway 1A in Thanh Hoa province.

There are two different datasets used for this study, including:

- Map of Thanh Hoa Road network and administrative boundaries digitized from Google Earth in shapefile form. Road attribute data includes length, width, road type, speed limit, etc., collected from reports provided by Thanh Hoa

Commented [AD1]: Bổ sung chữ “East Sea” trong bản đồ tổng thể

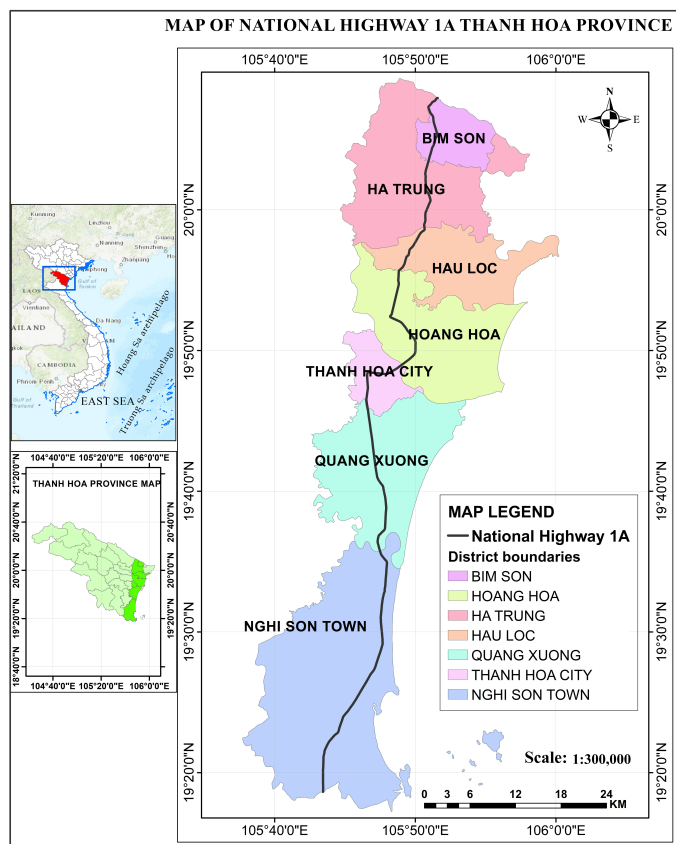


Figure 1. Study area - National Highway 1A passing through Thanh Hoa province.

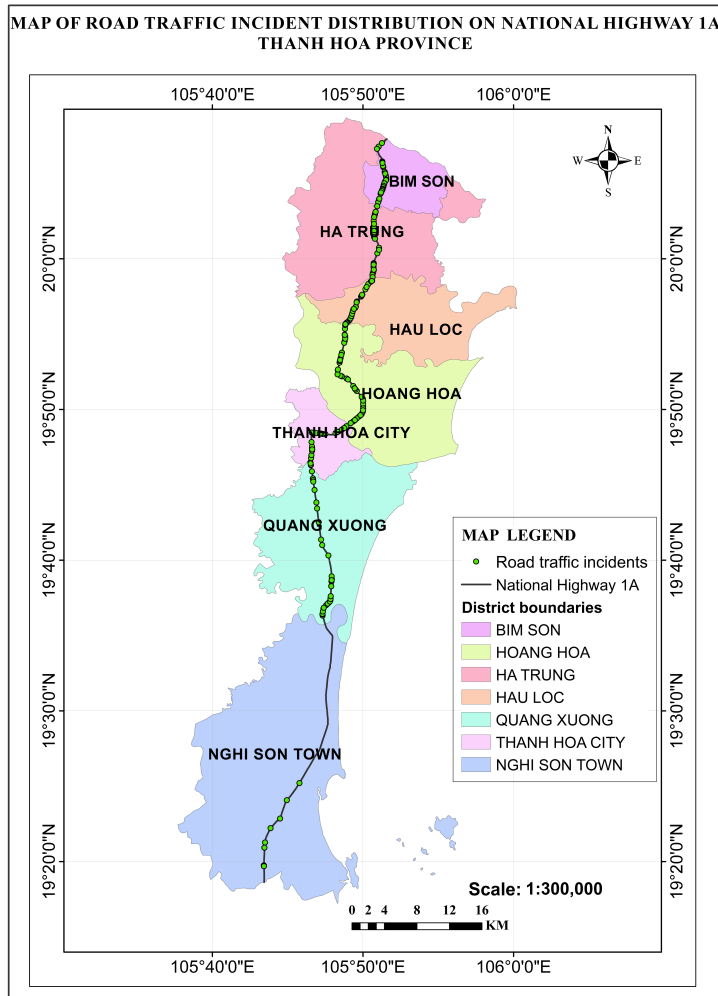


Figure 2. Map of road traffic incident distribution on National Highway 1A in Thanh Hoa province from 2020÷2023.

Department of Natural Resources and Environment.

- Road traffic incident dataset for four years from 2020÷2023 on National Highway 1A passing through Thanh Hoa province provided by the Transportation Police Department. This dataset includes essential information such as the date,

time, and location of the incident, type of incident and vehicle, number of deaths, number of injuries, etc. These datasets were combined and processed using ArcGIS 10.8 software. The process changes raw data into input data for the GIS system includes (1) Clean and filtering data to remove incomplete data; (2) Convert coordinates; (3) Add

coordinate data to determine the actual location of the accident on the map; (4) Enter attribute information; (5) The join and link method in ArcGIS 10.8 was then used to link the road data with the road accident data.

2.3. Methodology

2.3.1. Research Framework

After collecting data and building a thematic database of road traffic incidents in National Highway 1A in Thanh Hoa province for four consecutive years and a geographical database (including road network and administrative boundaries), analysis results were obtained by running the hotspot analysis tool in ArcGIS software. The study proposes a process for analyzing incident hotspots using spatial autocorrelation techniques, kernel density estimation, and Getis-Ord Gi* spatial statistics, as shown in Figure 3.

2.3.2. Data analysis

*Moran's index statistics of spatial autocorrelation

Statistically significant analysis of hotspots is a measure of spatial autocorrelation by observing incidents' distribution patterns. The test will decide to stop when there is a random distribution and vice versa. The spatial autocorrelation technique simultaneously

examines the incident's location and properties (Afolayan et al., 2022). Values of determined Moran's I ranging from -1÷1 Are considered statistically significant (Liu et al., 2019). If the Moran index value is close to 1, the data contain spatial autocorrelation and cluster patterns; If the Moran index value is close to -1, the data is not continuous and scattered. While an absolute zero index value indicates no spatial autocorrelation (Nejadrekabi et al., 2022). Based on the weight matrix, the Moran statistic is calculated using equation (1) as below (Lee and Wong, 2001).

$$I = \frac{n}{S_0} \frac{\sum_{i=1}^n \sum_{j=1}^n w_{ij} z_i z_j}{\sum_{i=1}^n z_i^2} \quad (1)$$

In which: z_i, z_j are the deviation from the average value; w_{ij} is the spatial weight between feature i and j ; n is the number of features, S_0 is the sum of all spatial weights and is calculated as follows:

$$S_0 = \sum_{i=1}^n \sum_{j=1}^n w_{ij} \quad (2)$$

The z_i score is calculated as follows:

$$z_i = \frac{I - E[I]}{\sqrt{V[I]}} \quad (3)$$

With:

$$E[I] = -1/(n-1) \quad (4)$$

$$V[I] = E[I^2] - E[I]^2 \quad (5)$$

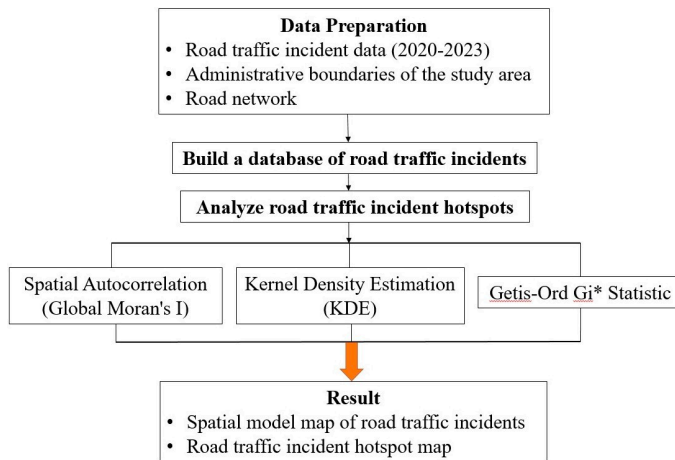


Figure 3. Road traffic incident hotspot analysis process.

* Kernel density estimation

The kernel density estimating method estimates the density of incident in an area by flattening the surface. This method is widely applied to analyze incident hotspots (Jientrakul et al., 2022; Su et al., 2019; Le et al., 2020). The analysis is implemented by applying the kernel function to each point and summing the results as the formula (Lakshmi et al., 2019).

$$\lambda(s) = \sum_{i=1}^n \frac{1}{\pi r^2} k\left(\frac{d_{is}}{r}\right) \quad (6)$$

Where $\lambda(s)$ is the density at location s , r is the bandwidth of KDE, and k is the weight of point i with distance d_{is} to location s .

* Getis-Ord Gi* statistics:

Mapping incident clusters in the study area based on hotspot analysis - Getis-ord Gi*. The output of this method includes Gizscores and Gipvalues that indicate whether high-value or low-value objects tend toward clusters (Le et al., 2022). The z-score and p -value obtained from spatial autocorrelation analysis indicate the incident locations with high values -hotspots and low values coldspots. However, to be designated as a hotspot, the incident location needs to have a higher value, with surrounding incident characteristics also having high values. The Getis-ord Gi* statistic was calculated to identify such hotspots according to formula 7:

$$G_i^* = \frac{\sum_{j=1}^n w_{ij} x_j - \bar{X} \sum_{j=1}^n w_{ij}}{\sqrt{\frac{[n \sum_{j=1}^n w_{ij}^2 - (\sum_{j=1}^n w_{ij})^2]}{n-1}}} \quad (7)$$

There: x_j is the attribute value of object j , w_{ij} is the spatial weight between objects i and j , and n is the total number of objects.

With:

$$\bar{X} = \frac{\sum_{j=1}^n x_j}{n} \quad (8)$$

$$S = \sqrt{\frac{\sum_{j=1}^n x_j^2}{n} - (\bar{X})^2} \quad (9)$$

The correlation between significance level p , confidence, and z-score is shown in Table 1.

Table 1. Correlation between p significance level, confidence level, and z score. (Cheng et al., 2019)

| z Score | Reliability | Level of significance p |
|-----------------|-------------|---------------------------|
| <-1.65 or >1.65 | 90% | <0.10 |
| <-1.96 or >1.96 | 95% | <0.05 |
| <-2.58 or >2.58 | 99% | <0.01 |

A positive z-score value (>1.96) is statistically significant ($p=0.05$), indicating that the observations are hotspot spatial clusters, and a negative z-score (<-1.96) is statistically significant ($p = 0.01$) otherwise is the cold spot. In the case of z-score > 1.96 and p -value <0.05, the observations are spatial clusters, and Gi* is statistically significant at the 95% confidence level. On the contrary, the observations are random in the case of p -value of 0.05 (Le et al., 2022).

3. Results

3.1. Global spatial autocorrelation analysis (Spatial Autocorrelation Moran's I)

From Figure 4 and the correlation in Table 2, Moran's I is 0.183853 (> 0.00), which shows that traffic incidents positively correlate with spatial distribution. The p -value is 0.029047 (<0.05), indicating that the probability of random

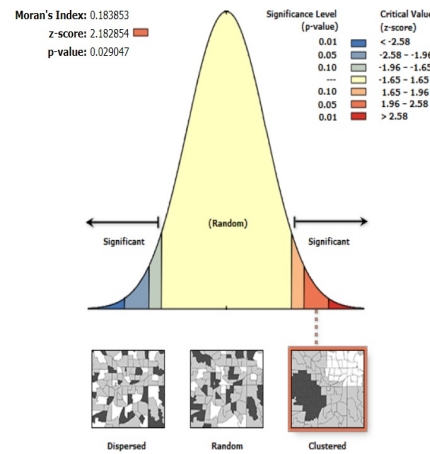


Figure 4. Spatial autocorrelation report of incident data from 2020-2023 on 1A National Highway, Thanh Hoa province.

distribution of traffic incidents is less than 5%. In contrast, the spatial clustering state in Figure 4 has a more than 95% probability. Furthermore, the value $z=2.182854$ is higher than 1.96, which proves that the spatial aggregation trend of accident incidents distributed according to the global Moran is significant, which means there is a concentrated pattern with traffic incidents.

3.2. Kernel density estimation

A map of traffic incident locations was created, as shown in Figure 2, after geocoding and combining traffic incident locations with the road network map. Then, the KDE method was applied to develop an incident density map while considering the Severity Index (SI). SI should be

regarded as identifying hotspots appropriate to Vietnam's conditions (Le et al., 2022). After analyzing KDE, it becomes easy to visualize traffic incident hotspots.

Figure 5 shows incident hotspots on National Highway 1A passing through Thanh Hoa province (2020÷2023), mainly in Hau Loc and Hoang Hoa districts. However, the results of applying the KDE method lack an assessment of the statistical significance of the above-identified hotspots. Therefore, it is necessary to investigate the statistical significance of hotspots using Getis-Ord G_i^* statistics to determine the most severe incident locations with corresponding statistical significance according to the dangerous level.

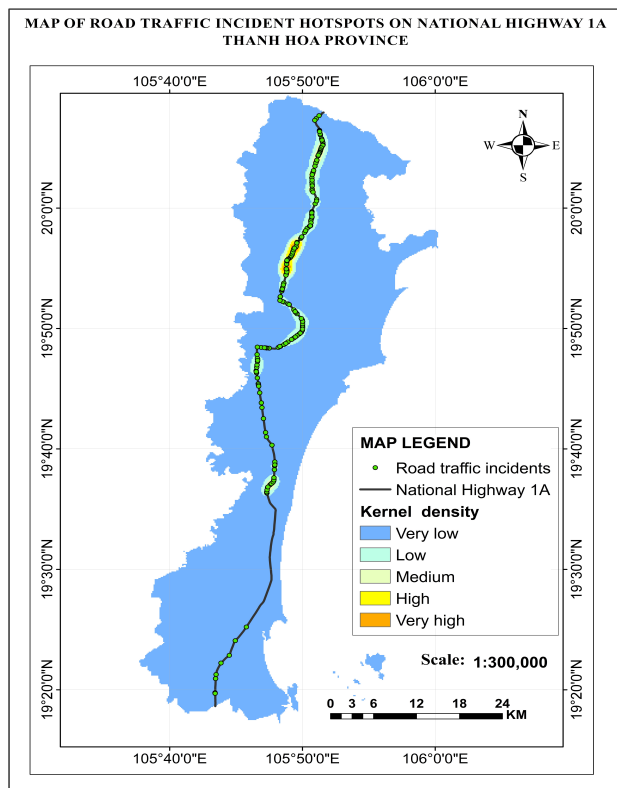


Figure 5. Map of Kernel density of road traffic incidents from 2020÷2023 on National Highway 1A in Thanh Hoa province.

3.3. Getis-Ord Gi statistics*

According to spatial autocorrelation analysis, the bandwidth of 3000 m, Getis-Ord Gi* analysis results in incident severity is shown in Figure 7. From 2020÷2023, on National Highway 1A through Thanh Hoa, there were 12 hotspots of road traffic incidents, with 6 points marked in red for a 99% statistical confidence level and 6 points marked in pink for a 95% statistical confidence level. This score is a high severity index and a high z-score value.

4. Discussion

Moran's I analysis revealed a statistically significant clustering pattern of road traffic incident data along National Highway 1A traversing Thanh Hoa province. The Getis-Ord Gi* analysis also detected traffic incident hotspots with a significance level of 0.05. These hotspots are predominantly situated along National Highway 1A, passing through Hau Loc and Hoang Hoa districts (see Figure 6).

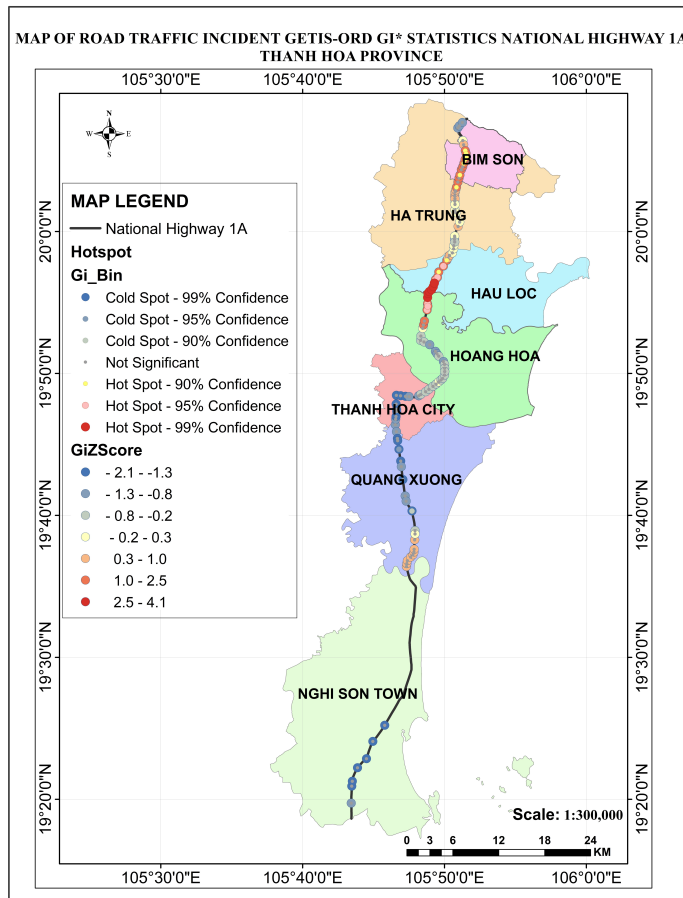


Figure 6. Getis-Ord Gi* statistical map of road traffic incidents (2020÷2023) on National Highway 1A, Thanh Hoa province.

The choice of bandwidth significantly influences the results of kernel density estimation. Through the application of an incremental spatial autocorrelation tool, the study determined a bandwidth of 3000 meters, deemed appropriate for the spatial pattern of incidents occurring on National Highway 1A in Thanh Hoa province. If the bandwidth is too large, the output results may fail to elucidate the detailed density of the study area, whereas if it's too small, the hotspots may become even more fragmented, hindering the determination of incident density (Anderson, 2009; Lakshmi et al., 2019).

Upon comparison of the results from the Getis-Ord Gi* statistical analysis and the kernel density estimation analysis illustrated in Figure 7, it becomes evident that the hotspot regions identified by both methods exhibit similarity when overlaid. Both analytical techniques identify and emphasize similar areas where hotspots occur. Consequently, the amalgamation of multiple analytical methods yields consistent results, effectively pinpointing hotspots with high confidence.

The analysis results reveal a greater concentration of hotspots in the northern section

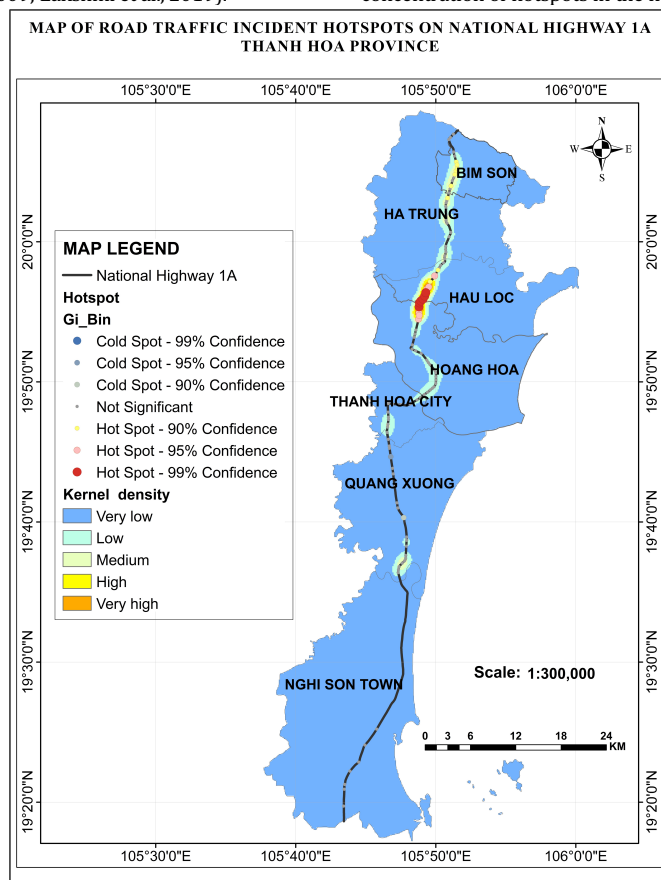


Figure 7. Map of road traffic incident hotspot analysis using Getis-Ord Gi* and Kernel density estimation on National Highway 1A in Thanh Hoa province.

of the national highway compared to the southern section. Mainly, there is notably high traffic density in the stretch from Thanh Hoa city center through Hau Loc and Hoang Hoa districts. Hotspots identified by Getis-Ord Gi* statistics, namely points 46, 47, 48, 49, 50, 52, 54, 56, 57, 59, and 62, coincide with the hot zone identified through kernel density estimation (refer to Figure 8).

Points 47, 50, 52, 54, 56, 59, and 62 are concentrated at bends in the national highway. These locations lack traffic signs, and some road segments are undergoing upgrades, possibly contributing to traffic incidents.

5. Conclusion

The study utilized spatial autocorrelation techniques, kernel density estimation (KDE), and Getis-Ord Gi* statistical analysis to identify statistically significant road traffic incident hotspots. This analysis considered 332 traffic incidents from 2020÷2023 on National Highway 1A in Thanh Hoa province. KDE was used to visualize incident hotspots, while Getis-Ord Gi* demonstrated the statistical significance of these hotspots.

In cluster analysis, Moran's I index identified a confidence limit value above 95%, which is considered a hotspot. Results from KDE and Getis-Ord Gi* statistical analysis revealed seven hotspots, ranked by priority according to z-score

values, in areas with a very high risk of incidents: locations 56, 57, 48, 59, 49, 62, and 47. Both analytical techniques identified and emphasized similar areas where hotspots occur. Combining these two methods in hotspot analysis provided consistent results, accurately identifying hotspots effectively and with high reliability.

Contributions of authors

Ha Thi Le, Thao Phuong Thi Vu - methodology, writing - original draft, review & editing; Thao Phuong Thi Do - review & editing.

References

- Abdullah, N., Saunders, C., McCaul, M., Nyasulu, P. (2021). A retrospective study of the pre-hospital trauma burden managed by the Western Cape Government Emergency Medical Services, *South African Journal of Pre-hospital Emergency Care*, 2(1), pp. 18-26.
- Afolayan, A., Easa, S. M., Abiola, O. S., Alayaki, F. M., Folorunso, O. (2022). GIS-based spatial analysis of accident hotspots: a Nigerian case study, *Infrastructures*, 7(8), pp. 103-126.

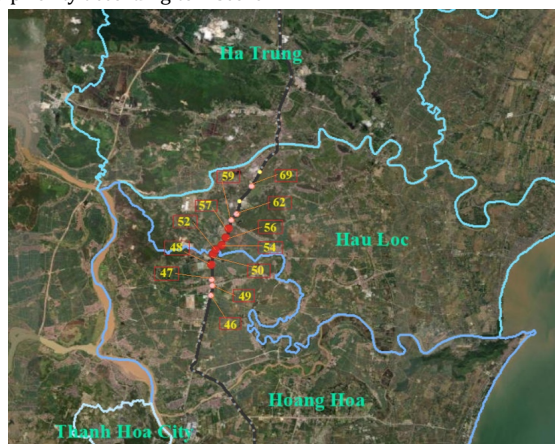


Figure 8. Location of road traffic incident hotspots on National Highway 1A in Thanh Hoa province.

- <https://doi.org/10.3390/infrastructures7080103>.
- Aguero-Valverde, J. & Jovanis, P. P. (2006). Spatial Analysis of Fatal and Injury Crashes in Pennsylvania, *Accident Analysis & Prevention*, 38(3), pp. 618-625.
- Anderson, T. K. (2009). Kernel density estimation and K-means clustering to profile road accident hotspots, *Accid Anal Prev*, 41(3), pp. 359-364.
- Campbell, J. R. & Knapp, K. K. (2005). Alternative crash severity ranking measures and the implications on crash severity ranking procedures, *In Proceedings of the 2005 Mid-Continent Transportation Research Symposium*.
- Carson, J. L. & Powers, M. (2004). Before-After Crash Analysis: A Primer for Using the Empirical Bayes Method Tutorial (No. FHWA/MT-04-002-8117-21). *Montana. Dept. of Transportation. Research Section*.
- Hauer E., Harwood D.W., Council F. M. and Griffith M. S. (2002), Estimating safety by the empirical Bayes method: a tutorial, *Transportation Research Record: Journal of the Transportation Research Board*, 1784(1), pp. 126-131.
- Jientrakul, R., Yuangyai, C., Boonkul, K., Chaicharoenwut, P., Nilsang, S. and Pimsakul, S. (2022). Integrating Spatial Risk Factors with Social Media Data Analysis for an Ambulance Allocation Strategy: A Case Study in Bangkok, *Sustainability*, 14(16), pp. 1-15. <https://doi.org/10.3390/su141610247>.
- Khatun, M. S., Hossain, M. A., Kabir, M. A., Rahman M. A. (2024). Identification and analysis of accident black spots using Geographic Information System (GIS): A study on Kushtia-Jhenaidah national highway (N704), Bangladesh, *Heliyon*, 10, pp. 1-16.
- Lakshmi, S., Srikanth, I. & Arockiasamy, M. (2019). Identification of Traffic Accident Hotspots Using Geographical Information System (GIS), *International Journal of Engineering and Advanced Technology*, 9(2), pp. 4429-4438. <http://dx.doi.org/10.35940/ijeat.B3848.129219>.
- Le, K. G., Liu, P., Lin, L. T. (2020). Determining the road traffic accident hotspots using GIS-based temporal-spatial statistical analytic techniques in Hanoi, Vietnam, *Geo-Spatial Inf Sci*, 23(2), pp. 153-164.
- Le, K. G., Liu, P., Lin, L. T. (2022). Traffic accident hotspot identification by integrating kernel density estimation and spatial autocorrelation analysis: a case study. *International journal of crashworthiness*, 27(2), pp. 543-553. <https://doi.org/10.1080/13588265.2020.1826800>.
- Lee, J., Wong D. W. (2001). Statistical Analysis with ArcView GIS, *John Wiley & Sons*.
- Liu, K., Lin, B. (2019). Research on influencing factors of environmental pollution in China: a spatial econometric analysis, *Journal of Cleaner Production*, 206, pp. 356-364. <https://doi.org/10.1016/j.jclepro.2018.09.194>
- Cheng Z., Zu Z., Lu J. (2019). Traffic Crash Evolution Characteristic Analysis and Spatiotemporal Hotspot Identification of Urban Road Intersections, *Sustainability*, 11 (1), pp.160 -177. <https://doi.org/10.3390/su11010160>.
- Manap, N., Borhan, M. N., Yazid M. R. M., Hambali, M. K. A., Rohan, A. (2019). Determining spatial patterns of road accidents at expressway by applying Getis-Ord Gi* spatial statistic, *International Journal of Recent Technology and Engineering*, 8(3S3), pp. 345-350.
- Manepalli, U. R., Bham, G. H. and Kandada, S. (2011). Evaluation of hotspots identification using Kernel Density Estimation (K) and Getis-Ord (Gi*) on I- 630, *3rd International Conference on Road Safety and Simulation*. Indianapolis.
- Mhetre, K. V., & Thube, A. D. (2023). Road safety, crash hot-spot, and crash cold-spot identification on a rural national highway in Maharashtra, India. *Materials Today: Proceedings*, 77, pp. 780-787.
- Nejadrekabi, M., Eslamian, S., Zareian, M. J. (2022). Spatial statistics techniques for SPEI and NDVI drought indices: a case study of Khuzestan Province, *International Journal of Environmental Science and Technology*, 19(7),

- pp. 6573–6594. <https://doi.org/10.1007/s13762-021-03852-8>.
- Nie, K., Wang, Z., Du, Q., Ren, F. & Tian, Q. (2015). A NetworkConstrained Integrated Method for Detecting Spatial Cluster and Risk Location of Traffic Crash: A Case Study from Wuhan, China. *Sustainability*, 7(3), 2662-2677.
- Olivier, S., Truong, M. H., & Le, H. C. (2021). Building a nonlinear model of cars for research on motion trajectory of autonomous cars, *Journal of Science & Technology*, 57(6), pp. 85-91.
- Ord, J. K., Getis, A. (1995). Local Spatial Autocorrelation Statistics: Distributional Issues and an Application, *Geographic Analysis*, 27(4), pp. 286-306.
- Peden, M. M. (2004), World report on road traffic injury prevention. World Health Organization.
- Plug, C., Xia, J. C., Caulfield, C. (2011), Spatial and temporal visualisation techniques for crash analysis, *Accident Analysis & Prevention*, 43(6), pp. 1937-1946.
- Prasannakumar, V., Vijith, H., Charutha, R., Geetha, N. (2011). Spatio-temporal clustering of road accidents: GIS based analysis and assessment, *J. Transp. Geogr*, 21, pp. 317-325.
- Su, J. M, Wang, Y. M, Chang, C. (2019). Application of a geographic information system to analyze traffic accidents using Nantou County, Taiwan, as an example, *J Indian Soc Remote Sens*, 47(1), pp.101-111.
- Tran, V. L., Nguyen, V. B., Tran, V. N., (2016). Simulation of car lane change using Steer By Wire steering system. *Proceedings of the 48th Science and Technology Club Conference of Technical University*.
- Truong, Q. T. (2023). Improving the effectiveness of state management of road traffic, *Journal of State Management*, 331, p. 76-80. DOI: <https://doi.org/10.59394/qlnn.331.2023.589>
- World Health Organization (2015). Global status report on road safety 2015. Geneva, Switzerland.
- Xie, Z, Yan, J. (2013). Detecting traffic accident clusters with network kernel density estimation and local spatial statistics: an integrated approach, *J Transp Geogr*, 31, pp. 64-71. <https://doi.org/10.1016/j.jtrangeo.2013.05.009>
- Yao, S., Loo, B. P. Y, Yang B. Z. (2016), Traffic collisions in space: four decades of advancement in applied GIS, *Ann Gis*, 22(1), pp. 1-14.